



Ravenfield Parish Council **Newsletter**

Issue No 16

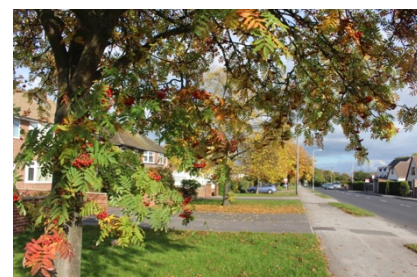
September 2019



Having your say!

We asked and some of you told us

Every few years, local councils have to update their action plans. Our last one was written in 2013 and the main aims have all been addressed, though not always completely solved. In May 2018 the Parish Council set up a steering group called **Ravenfield Community Plan Group** (RCPG) to find out what Ravenfield residents would like us to address next. Those invited to help represented as many ages, occupations and areas of the village as possible. The steering committee held focus groups and a drop-in day for everyone in the village, so as to involve as many residents as possible and find out what the public want their Parish Council (PC) to do. Questionnaires were delivered to every house, which could be returned to one of four local venues or completed online.



The response was disappointing. Fewer than 4% of households came to the drop-in day. Of the 1300 questionnaires sent out, just 158 were used. However, many local needs were discovered and the RCPG compiled an action plan which the PC has adopted.

Results

On a positive note, no-one said they did not want any of the improvements suggested.

The main issues were traffic problems, the lack of facilities for teenagers and the desire to keep the village looking as attractive as possible.

72% of respondents voted for increasing the precept, which we have decided to raise by 7%. This will cost each household little more than one cup of coffee and a cake over the coming year.

The main findings were:

- . Facilities for young people, especially teenagers, need improvement
- . Parking and speeding need further attention in several areas
- . Our green spaces and the crossroads area need attention
- . Community development and loneliness is an issue for some residents

Members of the RCPG have now drafted a constitution to enable them to apply for charity status. It is hoped that the group may then be eligible to apply for funding for parish resources. The group has also organised a community picnic and started a gardening group which has met several times to tidy the beds and pavements round the crossroads area. To counteract loneliness, a leaflet giving details of local community groups is now available at Ravenfield Surgery. A copy can be found on our website www.ravenfieldparishcouncil.gov.uk

For further details, look for this logo in the surgery.



Ravenfield Parish Council Chair's Report 2018/19

I took over the role of Chair in May from Cllr Neil Pearson. I would like to thank my fellow councilors for their hard work and support freely given (we are not paid) in attending meetings and liaising with other groups whose plans may affect the future of our village. In particular I would like to thank our Clerk to the Council, Gemma O'Carroll, who is supportive beyond the call of duty to requests for help and information. This year we welcomed Cllr Rebecca Jupp who has filled the vacancy left by Cllr Steph Hamshaw. We thank Cllr Hamshaw for her valuable contributions to the village. We thank Sarah our caretaker for keeping the facilities clean and set out for each group of hall users. Finally we thank Alan Napper, the Ward Councilor who comes regularly to Parish meetings and supports us in many practical as well as advisory ways.

It has been a busy year with many site meetings around the Parish and some exciting plans. Much time has been spent working on plans to improve the facilities for groups using the Parish Hall. To that end we have consulted users and local residents about what would be appropriate. An architect has drawn up plans which have been approved by the local planning department. We plan to use a local builder to start the work, probably early next year. These plans aim to provide improved facilities for the very young, the elderly and the disabled. Storage facilities for all groups will be made available as well as a book swap and a small meeting room for events which do not require the whole hall.

The PC has worked with John Healey MP to:

- get bus service 113 to Wickersley reinstated
- reduce speed limits on some of our main roads
- get Persimmon Homes to take responsibility for maintaining Woodlaithes balancing pond.



Volunteer gardeners from the RCPG

Other success stories include:

- Re-siting the Parish notice board and post box
- Getting permission and funding for a new waste bin for Moor Lane North near the school.
- Trees have been cleared and pruned on the Jubilee Field and a care plan for the future drawn up.
- Measures have been taken to relieve parking problems on Hollings Lane on match days using parking cones and requests for teams to park well away from the area.
- Repairs to the defibrillators and playground equipment have been carried out.
- Getting funding for lighting and resurfacing of the path from Woodlaithes to Hollings lane. The improvements will take place very soon.
- In response to requests from children at the school, we have been liaising with the brewery and the Cavalier to try to get some of the conifers at the crossroads lit for Christmas. Due to technical difficulties we still do not know if this will be possible.
- The new defibrillator in the old village has been used to save one life already.

The Parish Council was not in favour of building new houses near the crossroads, but our petitions to Rotherham Metropolitan Council (RMBC) only resulted in a slight decrease in the number of homes proposed. Since the development in question is on the edge of Bramley, but in the heart of Ravenfield village it was decided to ask Bramley PC if they would cede the affected field to us. They refused. We are now exploring legal means to see if the land should be reallocated to Ravenfield. A petition to alter the current parish boundary between Ravenfield and Bramley easily acquired the minimum 250 signatures to set the process in motion. This is not a land grab, but a way to ensure that new residents, who will be using Ravenfield addresses and facilities, can be amalgamated into our village appropriately. We will also need to try to improve facilities for the current residents most affected by the proposed developments. A decision from RMBC has not yet been given.

The Parish Hall, on Birchwood Drive, can be hired by groups or individuals at competitive rates. If you would like to make a booking or get the details for any of the groups below, please contact the Clerk to the Parish Council, **Gemma O'Carroll**, on **07462 468050** or email her at ravenfieldparishcouncil@yahoo.com

Parish Hall Timetable

Parish Hall Timetable			
	Am	Pm	Evening
Mon	Baby Sensory 3 sessions 9.00- 2.30pm. Term time only		Rotherham Lace-makers – 1st, 3rd and 4th Mondays in the month (but not Bank Holidays) 7.00 to 9.00 pm
Tues			Craft Club 1 st week 7-9 pm Art Club 2 nd & 4 th weeks 7-9 pm
Wed	Ravenfield Old Peoples' Social Fund – Every week 1 st week in the month coffee morning 10.00 am,		Indoor Bowling Every week 7.00 to 9.00 pm.
Thurs	Ravenfield Toddler Group Term time only 9.15 to 11.15 am.	Bramley Townswomen's Guild Craft Group, 2nd & 4th week 1.30 to 3.30 pm	Parish Council meeting 2 nd week 6.30 pm onwards. (Except August) Women's Institute 3 rd week 7.00 to 9.00 pm.
Fri	Sewing Club 10.00 – 3 pm Every week		Cllr Napper surgery 1 st Friday of month 4.00-5.00 pm
Sat	Dog Obedience Class 9:00 am – 12:00 am Every week		Available for private hire, birthday parties etc.
Sun	Available for private hire, birthday parties etc.		

Visit your local website for further details www.ravenfieldparishcouncil.gov.uk

News from Ravenfield Park

The Park improves year upon year and once again the bluebells were prolific and are now spreading to areas where they have not been seen before. Wildlife can be seen in abundance and this year the kingfishers have successfully brought up a family and can be seen darting in and around the ponds and stream.

But the year has not been without its difficulties. Three years ago we mysteriously lost a number of very valuable large carp from the pond as well as all the lilies. These fish could not easily be replaced even if funds allowed. Some smaller fish were restocked at a cost of £5000 but the loss resulted in a fall in members who only fish for specimens and pay handsomely to do so.

The cause of the problem identified by the Environment Agencies consulted was that water quality had declined due to the many tonnes of leaves that enter the pond annually from the surrounding alder trees. We were advised to fell many of them or lose the pond, so contractors were employed to cut down about 50 trees. We then treated the pond with microscopic chalk to help re-establish the aquatic environment. This was a very expensive procedure but necessary for the health of the ponds.



Help please!

Other financial problems, including the increasing costs of wages, consumables and equipment, are stretching our ability to manage the Park within the angling budget. We are therefore seeking additional methods of funding. It is not an easy task and we would welcome any suggestions or offers of help that anyone would care to make. We realise that the Park means just as much to other users as it does to anglers. We have achieved a great deal in the last 40 years. It would be a pity to let it slip now. If you have any ideas for ways to raise funds or wish to help, please contact martinread1790@btinternet.com

Martin Read

News from St James's Church

The past year has been a difficult one for our church. We have lost some of our regular congregation: a few through relocation and sadly some passing away, notably Roy Bromley and Gordon Hett. Gordon was our church organist for many years and played at weddings, christenings and funerals. Both were supportive of St James's Church. Only three weddings and eleven christenings have taken place in the past year.



Fund raising continues and we gratefully thank people for their donations. Our fashion show in July was well supported and our thanks go to the models who were press ganged into service at short notice. Perhaps a new career beckons for some? We supported the Cavalier Fun day, which was rather damp. We will again be supporting the Ravenfield Art Exhibition in November.

All of our fundraising has gone to the clock refurbishment and electrification. The entire clock has been sent away to The Cumbrian Clock Company who are specialists. The clock face has been painted blue with gilt numerals. Not all English church clocks are blue. The explanation for those that are, is due to a decree by King Henry VIII: that following God's command to Moses to make Aaron the Priest's garments of blue with gold bells, church clocks should reflect this. This project has been our biggest outlay for many years. I take this opportunity to thank all who have donated, especially a group of people (you know who you are) who have worked so hard to make it happen. We hope it will enhance and benefit the church for many years to come.

Our services continue as usual, with special services happening with the run up to Christmas. We are proud of our small friendly church and our aim is to keep St James's open for the benefit of the people of Ravenfield. The church is always available for your special day, be it a wedding christening or sadly a funeral. Finally, we thank our priest in charge, the Rev. Peter Hughes, for his hard work and leadership. Peter has six churches to oversee with the help of Rev. Neil Bowler. Peter is always upbeat and encouraging.



Contact Rev. Peter Hughes on 01709 543111
Church Warden Sandra Pearson on 01709 549689

Neil Pearson

The RAVENFIELD CHARITY

is here to help when you are in financial need through no fault of your own.

There is no red tape and no publicity, and confidentiality is assured.

The only criteria required to make an application is that you live in Ravenfield.

(Recipients in the past have been people with limited finances, who have needed to make an essential purchase or repair.)

If you think you are eligible please contact us. All applications will be considered on merit.

*The Secretary,
3 Hall Mews,
Ravenfield
ROTHERHAM S65 4PW*



Thanks to Tom and volunteers like him, our village stays well watered, tidied and cared for.



Reports from Clubs and Societies

The Events Group

We started in 2018 with a concert given by a versatile husband and wife duo singing and playing a variety of instruments. The first event of 2019 in March was a beetle drive followed by two others in July and one planned for October. These are always well attended and are great fun. In April, Helen Beck returned to entertain us with songs from the current London shows. Helen has become a great friend of the group over the years and this year we were delighted and thankful to welcome her return following two years of cancer treatment. Our last entertainment of 2019, is scheduled for 11 November, is a father and son duo singing in harmony. The final event of the year is to decorate the Parish Hall for Christmas. Raffles are held at each of our meetings and money collected goes to small local charities. Most recently this was the Yorkshire Air Ambulance. The Events Group wishes to thank all our patrons and supporters and to wish them well in 2020.



Val Burgess

Ravenfield Old People's Social Fund

The A.G.M in April returned all members of the committee to serve for another year. ROPSF membership stands at 136. Regretfully we lost three members each after a long illness, but gained a further three newcomers. Our Accounts were submitted to the Charity Commission and accepted. We remain in a very strong financial position, thanks to the Co-op Shopping Group which once again supported our fund.



In February members enjoyed a nice meal at the Ravenfield Arms followed by an entertaining singer. Our March visit to Millstone & Mill 67, near Harrogate, for a dinner and entertainment was enjoyed by everyone as was the day trip to Scarborough in July. Other trips this year by popular request are to Whitby in September and the Trafford Centre in November.

Continuing with our constitutional obligation to give our Social Fund members a "Treat", we enjoyed a very nice afternoon tea on our normal Coffee Morning day in June. Sandwiches, cakes

and scones followed by strawberries and buckets of fresh cream. Very nice indeed.

The Christmas Raffle Draw will be on Wednesday 13th November. Lets see if we can beat last year's total of 93 prizes which raised £450. Our Christmas Party is on Wednesday 4th December. We are sure it will be as good as previous years.

Geoff Outram

The Old Village Garden Society

This group in the old village continues to raise money from social events so as to keep the village planters bright with colour throughout the year. This year we have enjoyed a ceilidh, a 60s evening dancing to music by *The Beats*, and have held games and quiz nights.

Members go carol singing in December, decorate our planters for free, and buy and light two village Christmas trees. Members also weed, prune and tidy many areas of the village to keep them looking attractive for residents and visitors alike.



Jill Jesson



Ravenfield Women's Institute

We are a Women's Institute group based in Ravenfield, Rotherham that meets on the third Thursday of each month at 7 pm at Ravenfield Parish Hall.

We welcome women of all ages to come along to meet new people, have a little fun and learn new skills! We currently have around 50 members and new members are always welcome.

Guests are welcome to our meetings, and able to attend up to three meetings before being required to join as a member - entry is £5 each for guests and includes refreshments. As each month progresses many new friendships are made by many ladies living in and around our parish. Our February meeting with Howard Middleton from the Great British Bake Off (above) was very popular. Our June meeting was with deaf musician Paul Whittaker OBE. We are currently working on our programme for 2020 based on suggestions by our members.

Our group has also been actively involved in making hats for the Traffic Light Hat Appeal for the baby care unit, and mastectomy drain bags and pillows for people having cancer surgeries. We collect unwanted and broken jewellery for Heart Research UK, as well as crisp packets to recycle at the crisp packet recycling point instead of the items going to landfill, We donate to Maples Cancer Care, a Rotherham charity dedicated to improving the quality of life for people living with cancer.



As part on the National Federation of Women's Institutes (NFWI) we annually vote to pass resolutions, which form the basis of new NFWI campaigns. NFWI has lobbied on subjects such as mental health, litter, family planning, nursery places, health insurance and family allowance to name but a few. The resolutions passed this year were: a call against the decline in local bus services and *Don't Fear the Smear*. If you have any ideas or suggestions of what we can do locally to address these issues please get in touch. Our first Christmas Fair was held at the Parish Hall in late November 2017 which was well received with many varied crafts on display by our ladies. We are holding another one on Sunday 8 December 2019, so please put the date in your diaries and come along - all are welcome.

For more information about our WI please email: ravenfieldwi@outlook.com or follow us on Facebook <https://www.facebook.com/RavenfieldWI/>

Karen Jay

Ravenfield Indoor Bowling Club.

Why not come and have a look at our twice weekly bowling club? You can just sit and watch the game and have a cuppa with us, or try bowling for yourself. It's a great game and it offers an evening of gentle exercise and good banter. It's free to come and watch and if you fancy having a go it only costs £1 a week to play. Bring a clean pair of flat shoes or slippers and we will lend you a set of bowls and show you how to play. Ladies and gents over the age of 15 are all welcome.



We are a member of the local friendly indoor Bowling League and play matches against several local teams over the autumn and winter so it gets you out in the cold weather instead of sitting watching the telly.

We meet at the Parish Hall on Birchwood Drive Wednesday and Friday at 6.45pm. If you need any more information phone 01709 545078 or mobile 07973 938172

Neil McKinnon

Ravenfield Art Group

The Art Group meets twice a month on the second and fourth Tuesdays and continues to flourish under the tutelage of Rachel Lewis. In 2018 we held our first Art Exhibition, opened by local celebrity artist, Joe Scarborough. It was a great success selling many works of art and raising over £1000 for St James's Church whose members provided us with delicious refreshments. Several new members were encouraged to join the Art Group.

(Watch out for details of the next art exhibition the first week-end in November.) With help from both



members and non-members and with over 350 visitors it was felt that one of the best things about this event was the way it brought both ends of the village together.

Jill Jesson

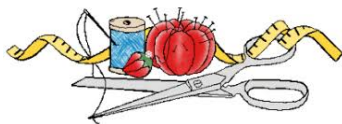
Ravenfield Sewing Group

We are a small group of people who like to sew and craft. We meet every Friday from 10 am – 3 pm, but everyone is welcome to come for just part of any session. Some members just come for a morning or afternoon session.

Bring your sewing machine or craft supplies with you. There is unlimited tea and coffee but please bring your lunch if you are staying for the full session. If you don't feel like sewing or crafting then just come for a natter. You will meet a group of people who like to share ideas and learn new skills. There is no formal teacher but all members are happy to share their experience and are happy to help.

We are a non-profit making group and only charge £4 for the full session and £2 for part of a session to cover the cost of the rent. Any excess is ploughed back into the club and we now have some tools that can be shared by everyone. We look forward to seeing you. Please contact Nina Parkin on Rotherham 548237

Nina Parkin



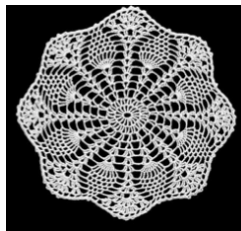
New Craft Group

We have formed a new Ravenfield Craft Club, meeting at the Parish Hall on the first Tuesday of the month at 7pm. Come along and join our group sharing different crafting skills or just for a meet and natter. We hope to share and learn new skills together in a friendly relaxed way.

The Lace-makers

We get together on Monday evenings in the Parish Hall. Meetings are held from the middle of January through to November, 7.00 - 9.00 pm (except the second Monday in the month and Bank Holidays).

Most of the group make lace, but several do other forms of craft including crocheting, knitting and beading. We are a self-help group and we are happy to help each other.



New members and visitors are always welcome. The Parish Hall is on Birchwood Drive. Ring Wendy on 07790 637382 for details.

Wendy Snook

The Ravenfield Bishops Chess Club

would welcome new members. Contact David Hill on 01709 851585 for details.



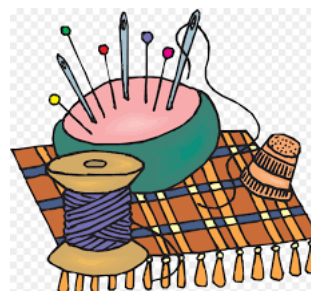
Bramley Townswomen's Guild Craft Group

We meet 2nd and 4th Thursdays in Ravenfield Parish Hall. Anyone living in Ravenfield is welcome.

You don't need to be a member of the Townswomen's guild to come along to meet new people, have a little fun and learn new skills. We have a craft group as well as speakers and social evenings. Free for members

Contact us on ravenfield@outlook.com
Or just turn up. £5.00 a session for visitors.

Val Burgess



Summer Fun and Games: A Picnic in the Park

As the saying goes 'only mad dogs and Englishmen go out in the midday sun!', and what could be more traditional than a family friendly picnic in the park? The first ever Community Picnic took place on the 14th July on Hollings Lane playing field. It was organised by the Ravenfield Community Plan Group. We were extremely fortunate to have the weather on our side for a change, and the sun shone for us, well most of the time.



It was lovely to see so many people of all ages turn up with their picnics and participating in the various games, including rounders, cricket, boules and frisbee. There was something suitable for all ages. It was a chance to chat with friends and meet new people and it was free! A big thank you to Andy at The Ravenfield Arms for allowing us to use their facilities. So if you missed it this year, look out for the posters next summer, let's make it even bigger and better.

Jayne Freeman

The Litter Pickers Group (Ravenfield Rubbish Rascals)

This friendly team has over 30 litter pickers. Each person patrols one of Ravenfield's roads and other places where litter is dropped or dumped. Car parks, playgrounds, the woods, the turning circle and areas near the shops and pubs are also covered.

We have done three community litter picks 2018 / 2019. In one session, 20 people collected more than 32 bags of rubbish. Our next one will be in Spring 2020. Do get in touch if you would like to help.



j.s.jesson@gmail.com

Jill Jesson

Did you know...?

People under
Chiropractic care use on
average 53% less
medication than those
who aren't under care



Chiropractic is MORE THAN JUST PAIN!

Come in or call your local clinic
today to find out how
YOU CAN BENEFIT!

01709 739 293



THE CAVALIER

HOLLINGS LANE, RAVENFIELD, S65 4PU

WARM AND FRIENDLY PUB



SKY SPORTS ON THE BIG SCREEN

TUES EVE OPEN MIC

THURS/SUN EVE QUIZ

SUNDAY LUNCH 12.30 - 4
BOOKING ADVISABLE

BETTY & STEVE ARE WAITING TO WELCOME YOU

01709 533727



- Are you aged between 18 and 25 years?
- Have you lived in Ravenfield for over 3 years?
- Do you intend taking up Further Education, Higher Education or Vocational training?

You could apply for a small grant from the

Ravenfield Educational Foundation

Include

- Your age
- The course you intend to follow
- Name and address of the Educational Establishment to be attended
- Names of 2 referees, with letters, to support your application



Applications must be received by

11 October 2019

Send to: The Secretary,

3 Hall Mews, Ravenfield, Rotherham. S65 4PW



Opportunities for students working towards their Duke of Edinburgh Award



THE DUKE OF
EDINBURGH'S AWARD
www.DofE.org



If you are creating your own personal programme of activities for your D of E award, why not add a community challenge and help your local community? The village has already helped several community-minded volunteers achieve recognition in this way for litter picking around the village. Equipment is supplied and forms completed by a local councillor. Contact Jill Jesson j.s.jesson@gmail.com or Karen Jay karenjayhome@gmail.com for more details.

If you have your own ideas for ways to help the local community, the Parish Council is keen to hear them.

We had a good response last year for our student grants.

Please remember that you must send the letters from your referees with your application, and be prepared to send receipts for goods bought if you are awarded a grant.

Baby Sensory

Every week is different at Baby Sensory. Sessions are an hour long starting with the wonderful Say Hello to the Sun Song. This is followed by half an hour of sensory activities before free play allowing parents time to chat and make new friends within the exploratory play area. After more sensory activities we sing our relaxing Wave Goodbye Song to finish. We use over 60 different plans, including recently a beach and a Yee Ha session where the babies were cowboys and cowgirls, riding a rodeo and singing songs around the campfire with fibre optic lights.

Ravenfield sessions run on Mondays in term time only. It is an award winning baby development programme for babies from birth – 13 months.

9.30 - 10.30 for babies 7 months to 13 months old

11.00 - 12.00 for 0-6 month babies

12.30- 13.30 for 0-13 months

For details contact Carolyn 07806 780134 You can book via the website <https://www.babysensory.com/rotherham/>

The Ravenfield venue is very popular and I hope in September I can add a fourth class for 0-6 month babies from 14.00-15.00. A no-obligation session costs £7.00. A block of 5 weeks costs £40.00, or my most popular is a block of 10 weeks for £70.00. Call or message me on my Facebook page *Baby Sensory Rotherham* for more details and booking information.



Volunteers of all ages who have helped with weeding, tidying and collecting litter round the village this year



Advance Notice of Seasonal Events.

Ravenfield WI Christmas Craft Fair

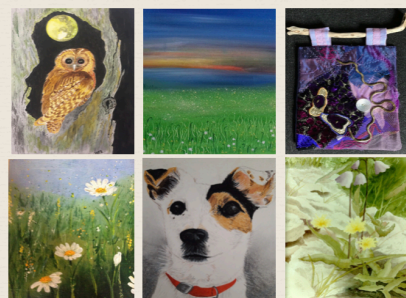
Sunday 8th December 2019 –
11am-3pm
at Ravenfield Parish Hall.



- Homemade gifts & treats for all the family and more...
- Tombola
- Christmas Jumper competition
- Reverse advent calendar donation point for Rotherham Food-bank
- Face Painting
- Refreshments available
- FREE entry - all welcome
- Fun for all the family!



RAVENFIELD ART EXHIBITION



AN OPPORTUNITY TO BUY
ORIGINAL ART AT
AFFORDABLE PRICES

RAVENFIELD PARISH HALL
2-3 November 2019
11.00 am - 4.00 pm
ADMISSION FREE

REFRESHMENTS AVAILABLE IN
AID OF ST JAMES'S CHURCH

Art demonstrations



Carols at the Cavalier

We are hoping to have a get-together for carol singing at the Cavalier on the first Tuesday in December 2019, with refreshments and a social afterwards. Look out for notices in shops, on the village noticeboard, on the School dojo, on the village website and local social media.

Tie a swag!

This year, why not make a swag for your door or gate? With a simple bunch of evergreens tied and decorated, we could make the whole village look really festive.



RAVENFIELD PRESCHOOL PLACES AVAILABLE

Learning should be fun and interesting, which is why we provide a friendly environment for children to explore and enjoy while they learn.

We have a fully qualified team that has a thorough understanding of child development and staff will plan learning opportunities based on what your child enjoys.

We are OFSTED registered and we follow the Early Years Foundation Stage Curriculum.

We offer sessional places for 2yr olds - 4yr olds, term time only.

We provide funded places for 2, 3 & 4 yr olds.

Telephone Donna on 01709 703990
e-mail info@ravenfieldpreschool.co.uk

How to report incidents of Crime or Anti-social Behaviour.

The Parish Council would like to urge residents to report all incidents of crime and anti-social behaviour to the police. Please don't assume that someone else will do it. Even where it appears unlikely that the police will attend or be able to do anything they do need to have a record of all incidents so that they can establish if there are any patterns emerging which will help them direct their limited resources to the right places.

When to call 999

When there is a threat to life; this includes road traffic accidents where people are injured, the road is blocked or a vehicle involved in the accident has failed to stop

Violence to a person or damage to property is imminent

A serious offence is actually in progress

A suspected offender is still at the scene of a crime

When any delay in reporting the incident may prevent the apprehension of an offender

When serious disruption to the public is currently taking place or is likely to take place



When to call 101 (non-emergency)

To report a crime that is not currently taking place and the offender is no longer present

Where your call is a routine enquiry

To make an appointment to attend an enquiry desk

Requests for advice or to provide information

Lost and found property enquiries

As an alternative to 101, you can also report your non-emergency incident online through at <https://www.reportingcrime.uk/>

Did you know that you could report anonymously?

If you want to report crime or suspicious activity, you can contact Crimestoppers with the information anonymously. You can do this by calling them on 0800 555 111 or by completing their online form

<https://crimestoppers-uk.org/give-information>

How to report a problem in your neighbourhood

If you have come across a problem in your neighbourhood you would like to report to Rotherham Metropolitan Borough Council relating to roads & streets, waste, recycling and environmental, and animal welfare you can do this by completing their online form:

<http://www.rotherham.gov.uk/report>

What is a parish council?

Parish councils are the first level of democratic government in Rotherham and made up of locally-elected councillors. In Ravenfield there are seven appointed councillors who help make decisions on issues that affect the local community.

The most common topics that parish councils get involved with are planning matters, crime prevention, managing open spaces and campaigning for and delivering better services and facilities.



On their own, parish councils have limited powers to make decisions. But they do have the ability to negotiate and influence other organisations (such as a borough council, health authorities, police etc,) which make final decisions.

A parish council also has the power to raise money through taxation, to help meet the spending requirements for a parish, through a precept payment. The precept is the parish council's share of the council tax.



Gemma O'Carroll, our clerk to the Parish Council, can be contacted for bookings or any matter relating to the Parish Council on **07462 468050** or by emailing her at ravenfieldparishcouncil@yahoo.com

Police Contact Numbers

Safer Neighbourhood Team: 01709 832422
Non Emergency Police: 101
Motor Bike Nuisance: 01709 832444

Thanks to Streetpride for several new notices about fly-tipping. These do make some difference.



**If you see fly-tipping please report it to
Streetpride 336003**

Useful Contact Numbers

RMBC Main Switchboard: 01709 382121

Streetpride (RMBC): 01709 336003 (*information on street cleaning, maintenance & environmental issues*)

Key Choices (RMBC): 01709 336005 (*information on letting of Council properties*)

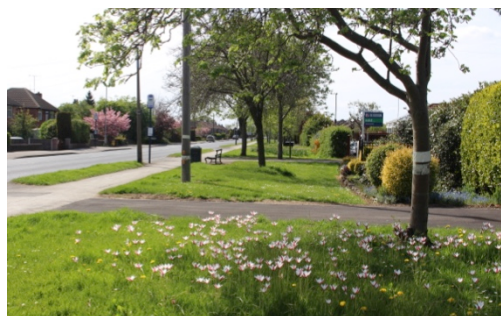
Revenues and Benefits (RMBC): 01709 336006 (*information on Council Tax and Benefit entitlement*)

Council Housing Repairs (RMBC): 01709 336009

Ravenfield Parish Council Accounts Year Ended 31st March 2019

	Year Ending 31 st March 2018	Year Ending 31 st March 2019
Balances brought forward	£51,112	£63,049
(+) Annual Precept	£40,987	£42,170
(+) Total Other Receipts	£11,552	£11,472
(-) Staff Costs	£12,267	£14,751
(-) Loan interest / Capital Repaid	£5,571	£5,571
(-) Total Other Payments	£22,764	£25,499
(=) Balances Carried Forward	£63,049	£70,870
Total Cash and Investments	£63,049	£70,870
Total Fixed Assets	£366,311	£365,370
Total Borrowings	£40,197	£36,542

The above accounts were subject to internal and external audit and were accepted and approved by the Council.



Who's Who

MP: John Healey 01709 875943
MEP: Linda McAvan 01709 875665

Address of both

79 High Street, Wath-upon-Dearne
Rotherham S63 7QB

Rotherham Borough Councillors Silverwood Ward 14

Gwendolene A Russell 01709 703432
Alan Napper 01709 548768
Steve Marles 01709 255966

Parish Councillors:

Karen Jay (Chair)
David Rowley (Vice Chair)
David Finch
Brian Callear, Rebecca Jupp
Neil Pearson, Jill Jesson

Clerk to the Parish Council: Gemma O'Carroll
Ravenfield Parish Hall
Birchwood Drive
Ravenfield S65 4PT
Telephone: **07462 468050**

View your local web-magazine at:
www.ravenfieldparishcouncil.gov.uk